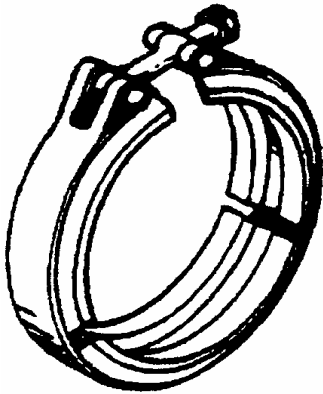
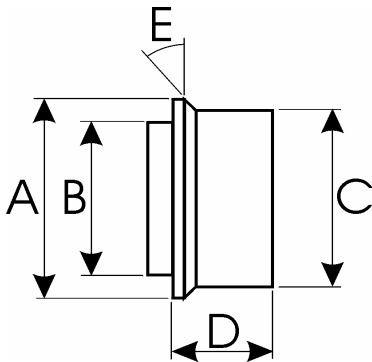




## Clamp V Band



Nominal Tube		Application	O.E. Refer.	P/No
inches	mm			
3	76	Cummins BT190		2499
3	76	Cummins V903/V555	183670	2500
3	76	Detroit 6V-53/6V-71	5137620	2501
3½	89	Cummins VT555	102408	2502
3½	89	Detroit 8V-71/6-71	5137619	2503
4	102	Detroit 6-71N	5137618	2504
4⅞	124	Detroit 8V-71T	5132650	2505
5	127	Cummins Turbo T50/VT50	186917	2506
5	127	CAT 3406 Cummins NTC VT	186917	2506E
5	127	Detroit 5" 6V-71/8V-71/12V-71	5148101	2507
4	102	Mack	48RU 2341	2508
4	102	Cummins L10/CAT 3176T	1157741	2509
3½	89	CAT 3208T	1W5455	2511
2¾	70	Cummins 'B' series	3903652	2512
4	102	Detroit 6-71T/12V-71/8-2T/8-2N	5138363	2513



## Adaptor for GM Engine

Dimension	Application		P/No
	mm	Deg	
A	127.5	Adaptor for Detroit Engines:	2510
B	114.3	8V-71T, 6V-92T, 8V-92T,	
C	122	16V-71T, 16V-92T.	
D	49.2		
E		20	

Refer. Detroit Part No. 5101814(5") and 5132633(4") use with Part No. 2505